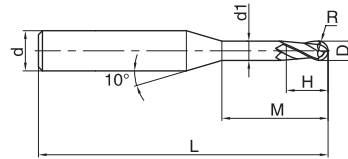


## 2-flute ball nose end mills with straight shank, long neck and short cutting edge

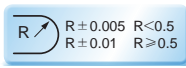
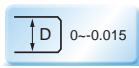
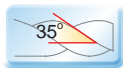


Deep ball nose slot

### GM-2BP



- Suitable for machining narrow slot and free-form surface.



Ordering number	Basic dimension(mm)							Number of teeth Z	Stock
	D	R	H	d1	M	d	L		
GM-2BP-R0.25-M04	0.5	0.25	0.7	0.45	4	4	50	2	●
GM-2BP-R0.25-M06	0.5	0.25	0.7	0.45	6	4	50	2	●
GM-2BP-R0.3-M04	0.6	0.3	0.9	0.55	4	4	50	2	●
GM-2BP-R0.3-M06	0.6	0.3	0.9	0.55	6	4	50	2	●
GM-2BP-R0.3-M08	0.6	0.3	0.9	0.55	8	4	50	2	●
GM-2BP-R0.4-M04	0.8	0.4	1.2	0.75	4	4	50	2	●
GM-2BP-R0.4-M06	0.8	0.4	1.2	0.75	6	4	50	2	●
GM-2BP-R0.4-M08	0.8	0.4	1.2	0.75	8	4	50	2	●
GM-2BP-R0.4-M10	0.8	0.4	1.2	0.75	10	4	50	2	●
GM-2BP-R0.5-M04	1.0	0.5	1.5	0.95	4	4	50	2	●
GM-2BP-R0.5-M06	1.0	0.5	1.5	0.95	6	4	50	2	●
GM-2BP-R0.5-M08	1.0	0.5	1.5	0.95	8	4	50	2	●
GM-2BP-R0.5-M10	1.0	0.5	1.5	0.95	10	4	50	2	●
GM-2BP-R0.5-M12	1.0	0.5	1.5	0.95	12	4	50	2	●
GM-2BP-R0.6-M06	1.2	0.6	1.8	1.15	6	4	50	2	●
GM-2BP-R0.6-M08	1.2	0.6	1.8	1.15	8	4	50	2	●
GM-2BP-R0.6-M12	1.2	0.6	1.8	1.15	12	4	50	2	●
GM-2BP-R0.6-M16	1.2	0.6	1.8	1.15	16	4	50	2	●
GM-2BP-R0.75-M08	1.5	0.75	2.3	1.45	8	4	50	2	●
GM-2BP-R0.75-M12	1.5	0.75	2.3	1.45	12	4	50	2	●
GM-2BP-R0.75-M16	1.5	0.75	2.3	1.45	16	4	50	2	●
GM-2BP-R1.0-M06	2.0	1.0	3.0	1.95	6	4	50	2	●
GM-2BP-R1.0-M08	2.0	1.0	3.0	1.95	8	4	50	2	●
GM-2BP-R1.0-M10	2.0	1.0	3.0	1.95	10	4	50	2	●

● Stock available ○ Make-to-order

### Applicable workpiece material table

● Very suitable ○ Suitable

Workpiece material											
Carbon steel	Alloy steel	Pre-hardened steel、Hardened steel				Stainless steel	Cast iron, Nodular cast iron	Copper alloy	Aluminum alloy	Titanium alloy	Heat resistant alloy
		~40HRC	~50HRC	~55HRC	~68HRC						
○	○	○	○	○	○	○	○	○	○	○	



Graphics category and identification



Cutting parameters

