

MILLING Solid Carbide End Mills

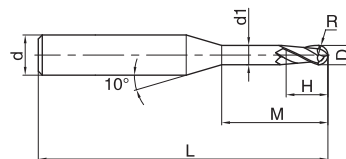
GM series for general machining



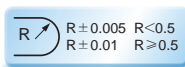
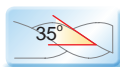
Deep ball nose slot

2-flute ball nose end mills with straight shank, long neck and short cutting edge

GM-2BP



- Suitable for machining narrow slot and free-form surface.



Ordering number	Basic dimension(mm)							Number of teeth Z	Stock
	D	R	H	d ₁	M	d	L		
GM-2BP-R1.0-M12	2.0	1.0	3.0	1.95	12	4	50	2	●
GM-2BP-R1.0-M16	2.0	1.0	3.0	1.95	16	4	50	2	●
GM-2BP-R1.0-M20	2.0	1.0	3.0	1.95	20	4	50	2	●
GM-2BP-R1.25-M08	2.5	1.25	3.7	2.4	8	4	50	2	●
GM-2BP-R1.25-M12	2.5	1.25	3.7	2.4	12	4	50	2	●
GM-2BP-R1.25-M16	2.5	1.25	3.7	2.4	16	4	60	2	●
GM-2BP-R1.25-M20	2.5	1.25	3.7	2.4	20	4	60	2	●
GM-2BP-R1.5-M08	3.0	1.5	4.5	2.85	8	6	50	2	●
GM-2BP-R1.5-M10	3.0	1.5	4.5	2.85	10	6	50	2	●
GM-2BP-R1.5-M12	3.0	1.5	4.5	2.85	12	6	50	2	●
GM-2BP-R1.5-M16	3.0	1.5	4.5	2.85	16	6	60	2	●
GM-2BP-R1.5-M20	3.0	1.5	4.5	2.85	20	6	60	2	●
GM-2BP-R2.0-M10	4.0	2.0	6.0	3.85	10	6	60	2	●
GM-2BP-R2.0-M16	4.0	2.0	6.0	3.85	16	6	60	2	●
GM-2BP-R2.0-M20	4.0	2.0	6.0	3.85	20	6	60	2	●
GM-2BP-R2.0-M25	4.0	2.0	6.0	3.85	25	6	60	2	●
GM-2BP-R2.5-M16	5.0	2.5	7.5	4.85	16	6	60	2	●
GM-2BP-R2.5-M25	5.0	2.5	7.5	4.85	25	6	70	2	●

● Stock available ○ Make-to-order

B

Indexable milling tools
Solid carbide end mills

GM series

Applicable workpiece material table ○ Very suitable ● Suitable

Workpiece material											
Carbon steel	Alloy steel	Pre-hardened steel, Hardened steel				Stainless steel	Cast iron, Nodular cast iron	Copper alloy	Aluminum alloy	Titanium alloy	Heat resistant alloy
		~40HRC	~50HRC	~55HRC	~68HRC						
○	○	○	○	○	○	○	○	○	○	○	



Code key B192



Graphics category and identification B193



Cutting parameters B346-B347